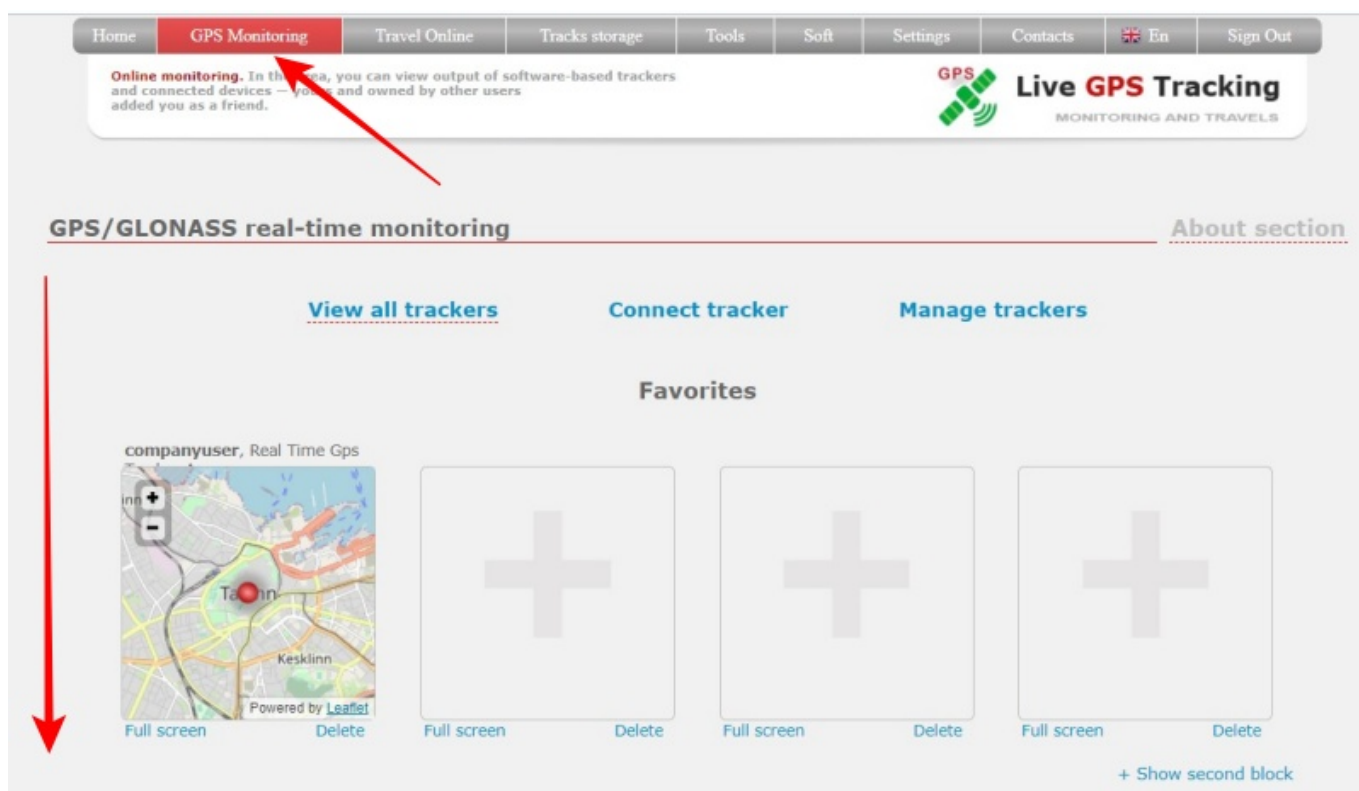


How to disable DashBoard when entering a section

When you enter the “GPS Monitoring” section, an intermediate information page first opens - DashBoard. The page is intended primarily for new users and initially provides information on the main parts of the section.

For users who use the platform for a long time and do not need the information page, it is possible to disable it and go directly to the map.

→ In the top menu of the site, the item “**GPS Monitoring**” → Scroll to the bottom of the page → Check the box “**Do not display this page, go to viewing all trackers now**”



[Available models](#)[Plans](#)[Section instructions](#)

The section is intended for online tracking movement of vehicles, people, and animals. Tracking is carried out using special purpose devices — GPS/GLONASS trackers.

There are **more than 800 tracker models** are connected to our monitoring service. Full list of devices can be found on page [AVAILABLE MODELS](#). If you have not found your model, read [the instruction on connecting new models](#). We develop our own tracker app for our service users "RealTime GPS Tracker". RealTime GPS Tracker can be used on smartphones and tablets based on [Android](#), [WinPhone](#) and [WindowsMobile](#).

You can observe the movement of your trackers not only on website, but also on your Android smartphone or tablet. We have developed special app for this purpose. "[Mobile dispatcher](#)".

We try to make our service available to everyone. That's why we allow to connect **4 trackers** and use base functions absolutely **for free**. You can get read about free basic functions and advantages of the payed plans on a special page with [PLANS](#).

To easily understand how to use the features, you can get the instructions in our [MANUAL](#). The manual contains detailed information and provided with illustrations.

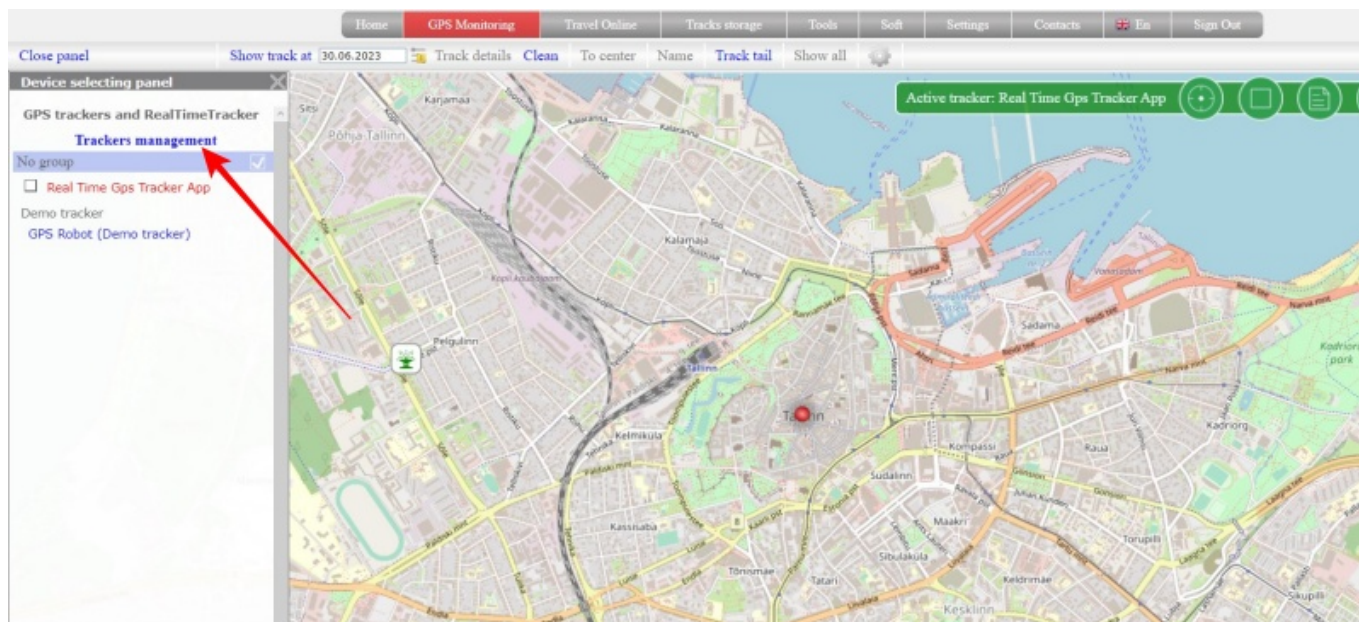
We hope that using the service will bring you pleasure! And if you have any questions or suggestions, you can always write to our technical support. support@livegpstracks.com or to the [forum](#).

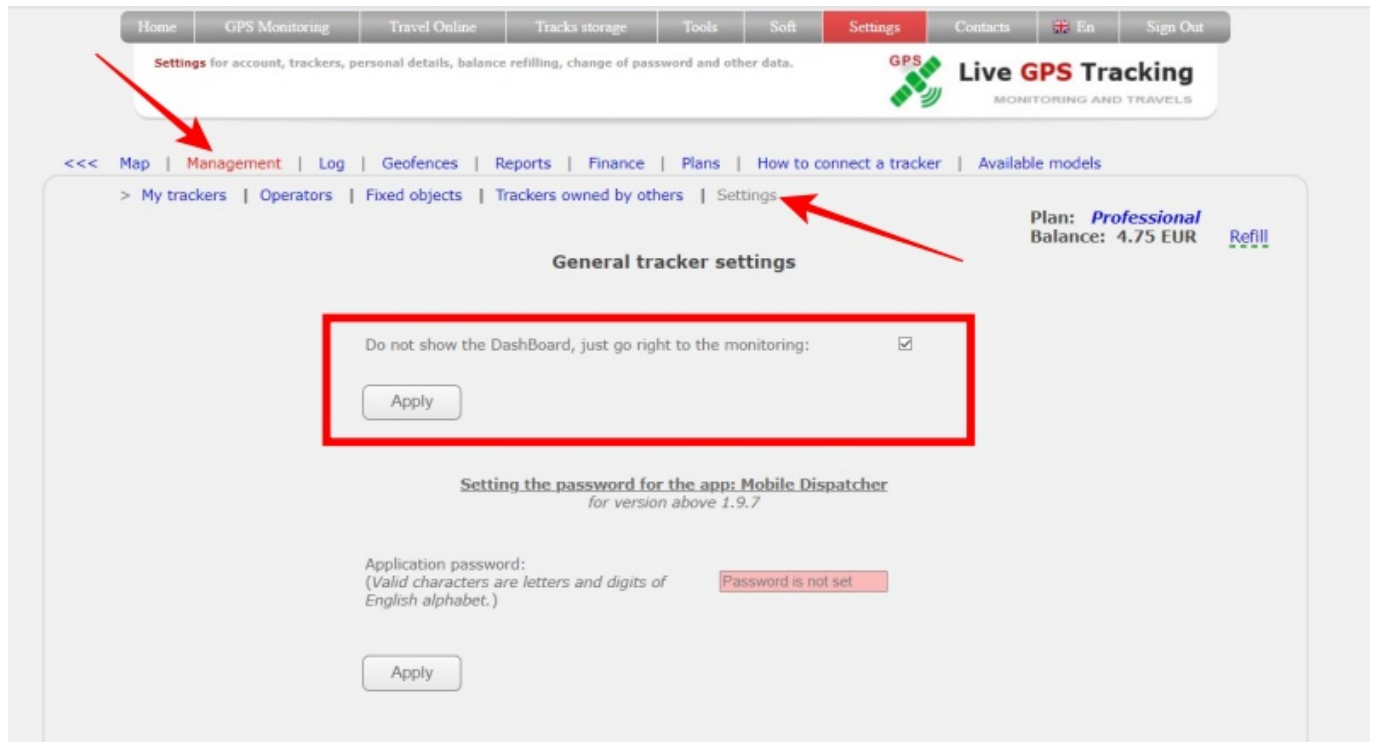
☐ Do not display this page, go to [viewing all trackers now](#)

This setting can be changed in [section settings](#) "GPS/GLONASS Monitoring"

How to enable Dashboard

- On the map press "**Trackers management**"
- Go to the "**Settings**" tab
- Turn off "Do not show the DashBoard, just go right to the monitoring:" setting
- Press "**Apply**" button





Home | GPS Monitoring | Travel Online | Tracks storage | Tools | Soft | **Settings** | Contacts | En | Sign Out

Settings for account, trackers, personal details, balance refilling, change of password and other data.

GPS Live GPS Tracking
MONITORING AND TRAVELS

<<< Map | **Management** | Log | Geofences | Reports | Finance | Plans | How to connect a tracker | Available models

> My trackers | Operators | Fixed objects | Trackers owned by others | **Settings**

Plan: **Professional**
Balance: 4.75 EUR [Refill](#)

General tracker settings

Do not show the DashBoard, just go right to the monitoring: ☒

[Apply](#)

Setting the password for the app: Mobile Dispatcher
for version above 1.9.7

Application password:
(Valid characters are letters and digits of English alphabet.)

[Apply](#)

Password is not set

From:
<https://help.livegpstracks.com/> - **LiveGPStracks.com**

Permanent link:
https://help.livegpstracks.com/doku.php?id=how_to_disable_dashboard_when_entering_a_section

Last update: **2023/06/30 09:59**

