

# SMS Command Sets

## What is it

An SMS command set is simply a list of commands you save in advance so you can send them to your tracker in just a few taps.

Instead of typing commands every time, you create them once - and reuse them whenever needed.

## How it works

You create a set inside the app:

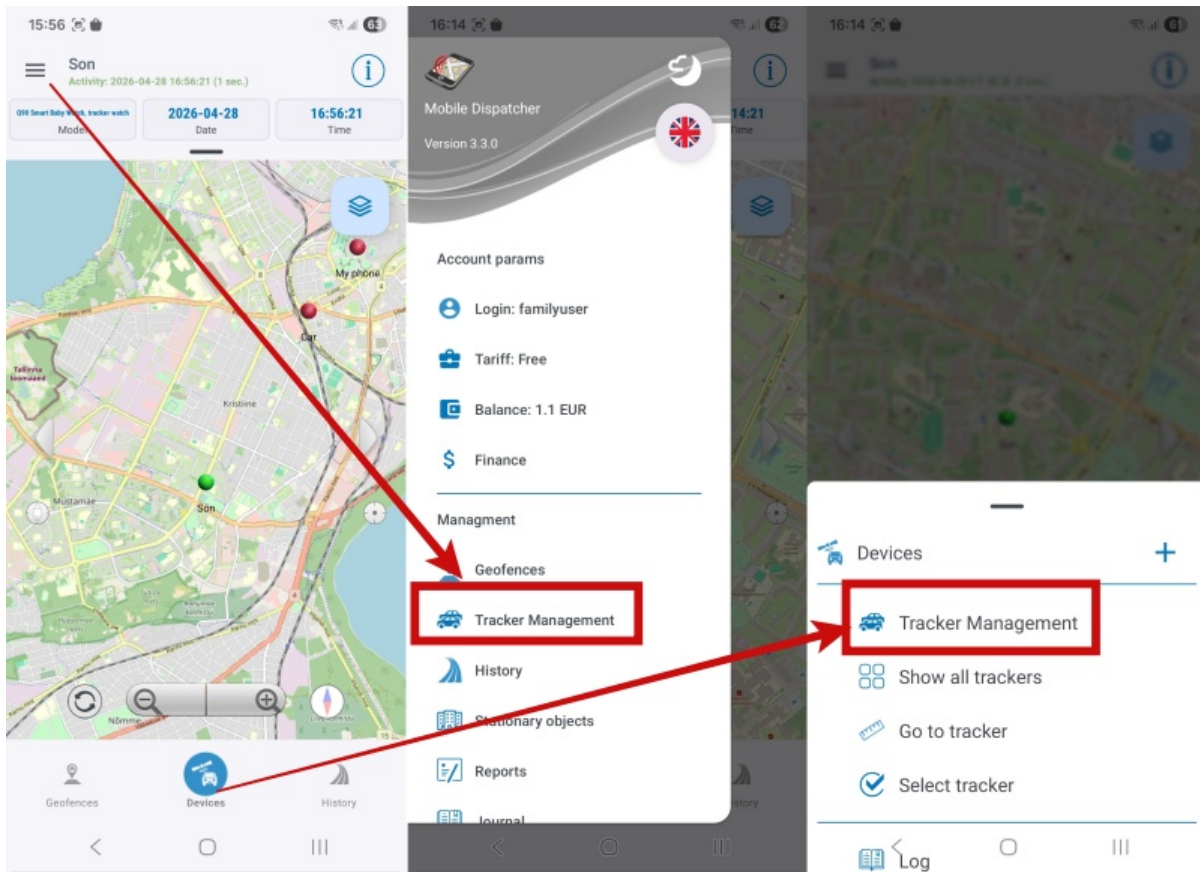
- give it a name (e.g. TK905)
- optionally add a description
- add SMS commands:
  - the command text
  - a clear name (e.g. "Factory reset")

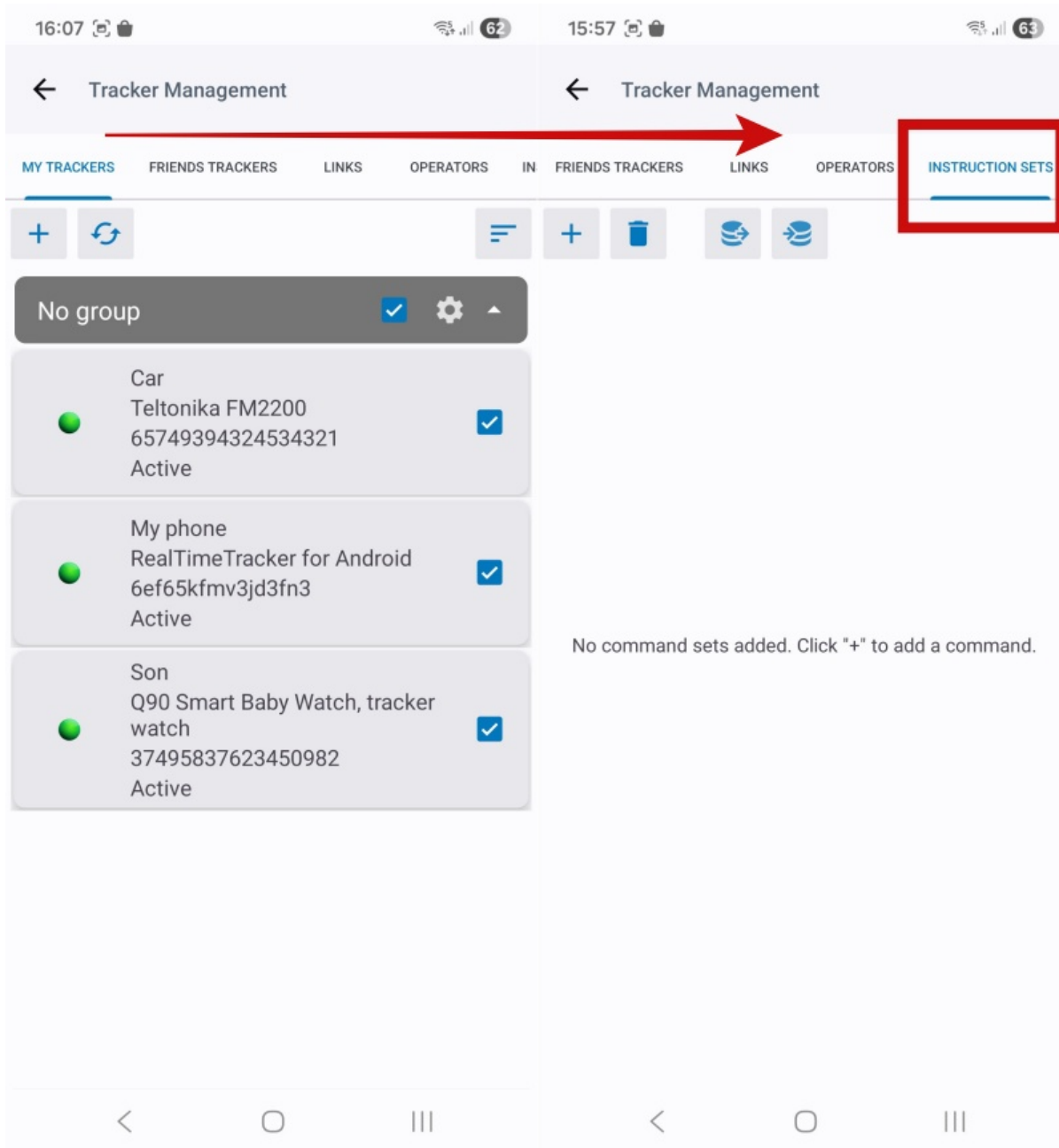
After that, all your commands are always at hand.

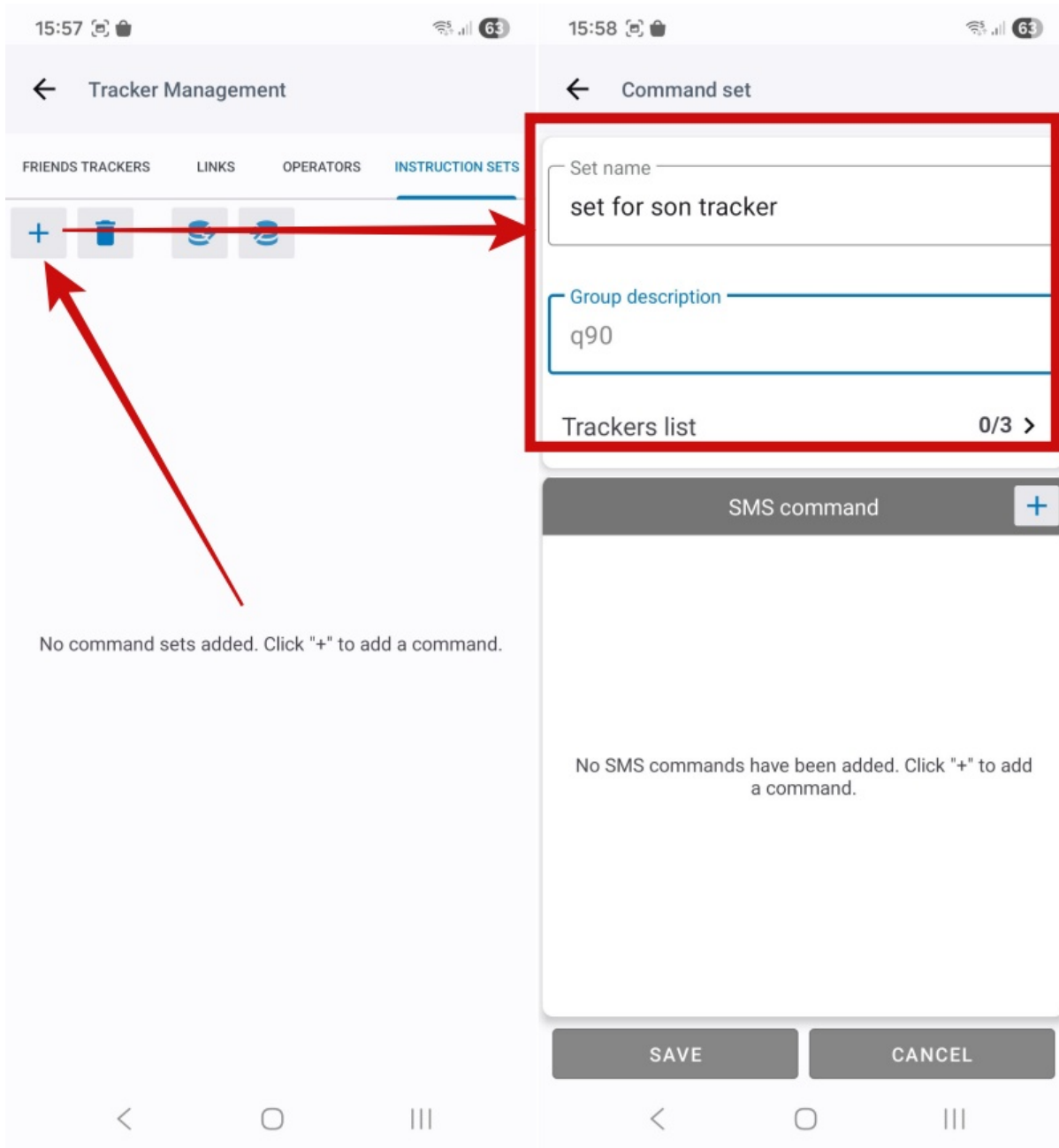
## How to create a set

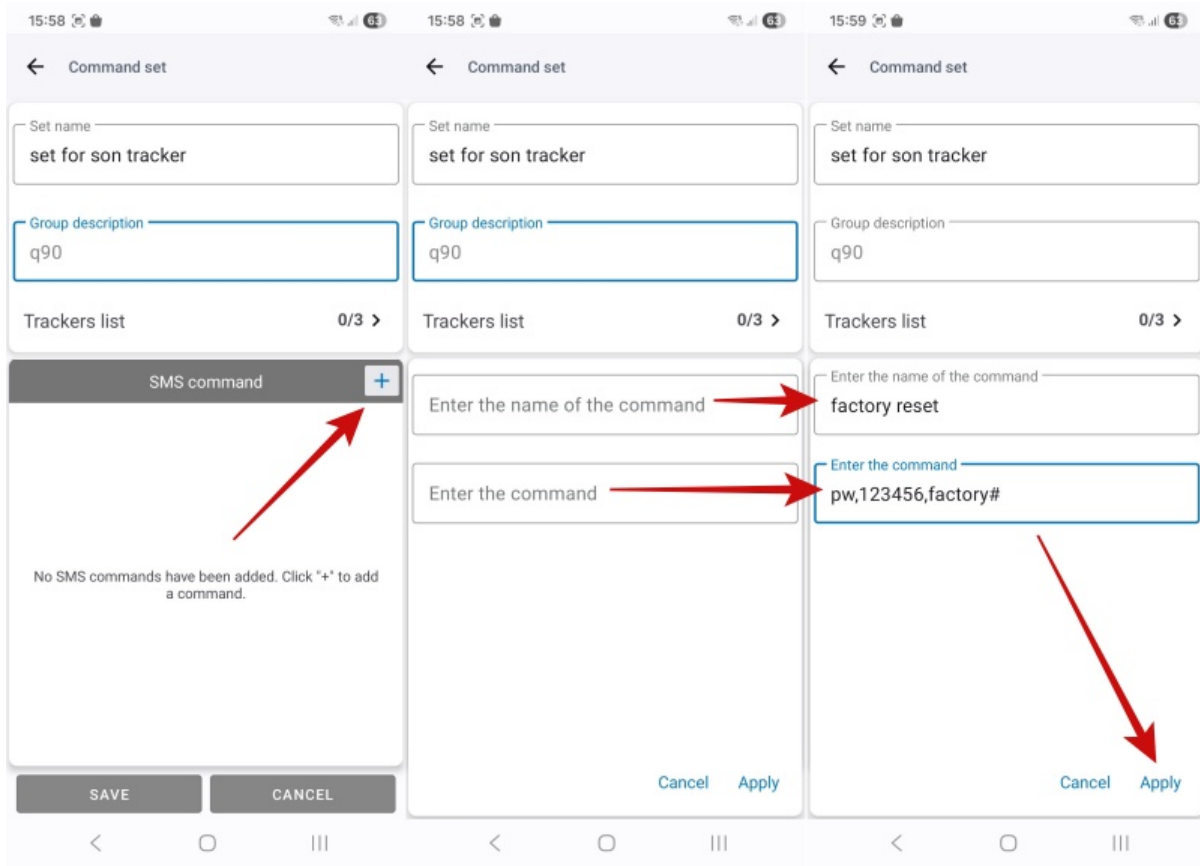
- Open Mobile Dispatcher
- Go to Tracker Management
- Find the Command Sets tab
- Tap "+"
- Enter a name (and optional description)
- Add commands (using "+" inside the set)
- Tap Save

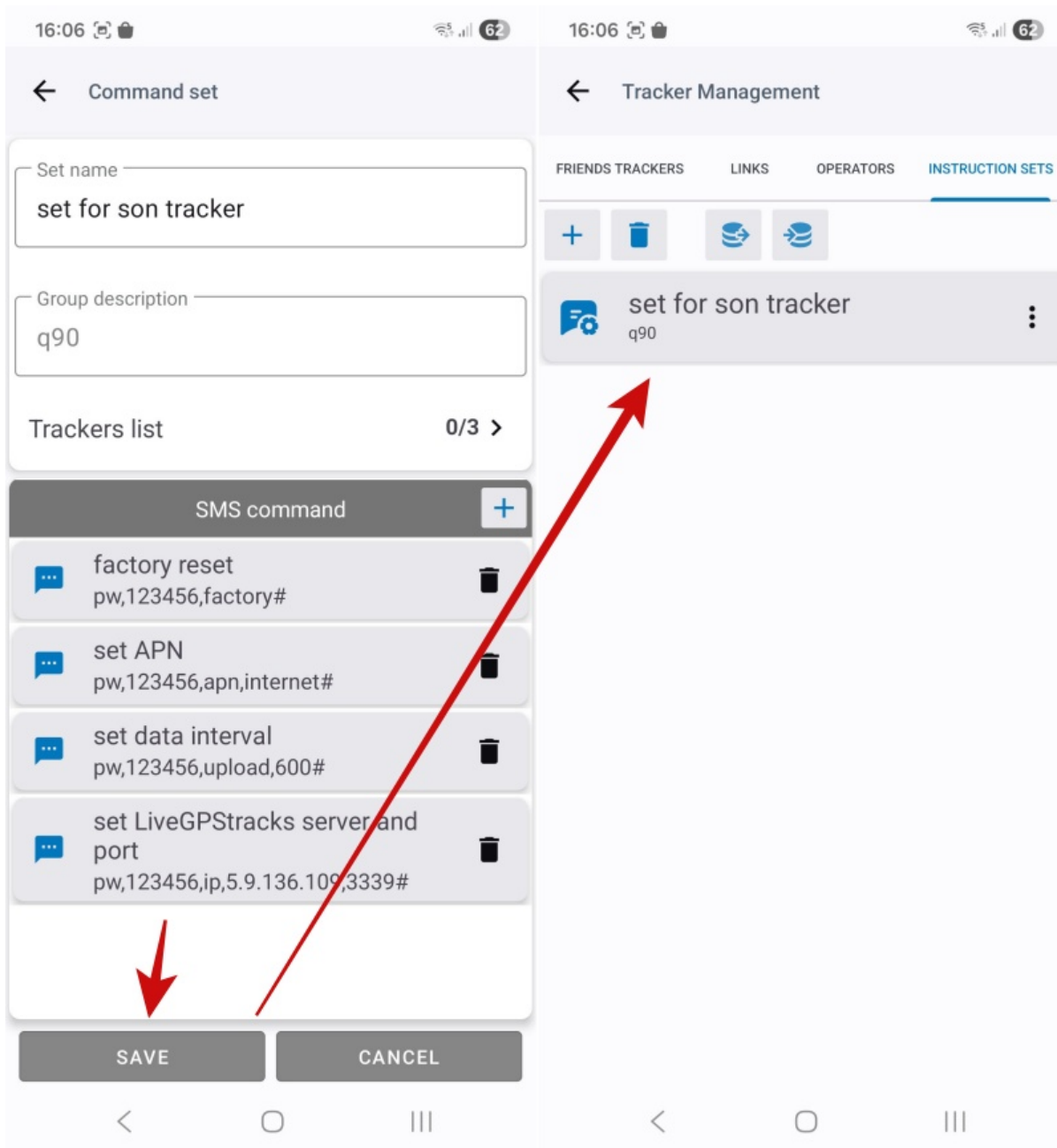
Done — your set is ready.











### How to edit

- To edit a set — just open it
- To edit a command — tap on it

You can:

- change names
- edit command text
- add or delete commands

Don't forget to save your changes.

## How to delete

- Delete a set - via “...” → Delete
- Delete a command - using the trash icon inside the set

## How to send commands

Important: creating a set does not automatically link it to a tracker - you need to assign it.

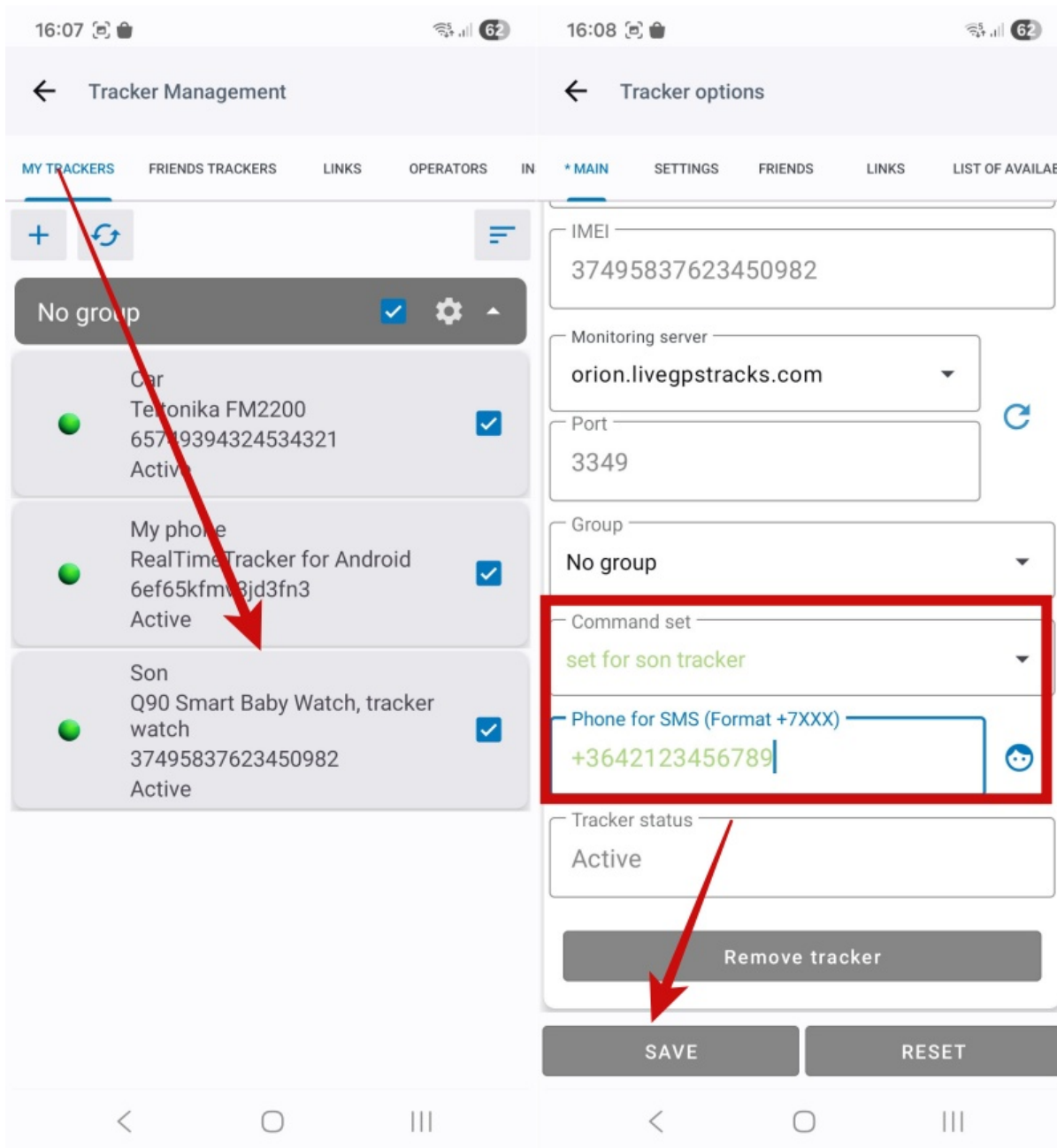
Here's how:

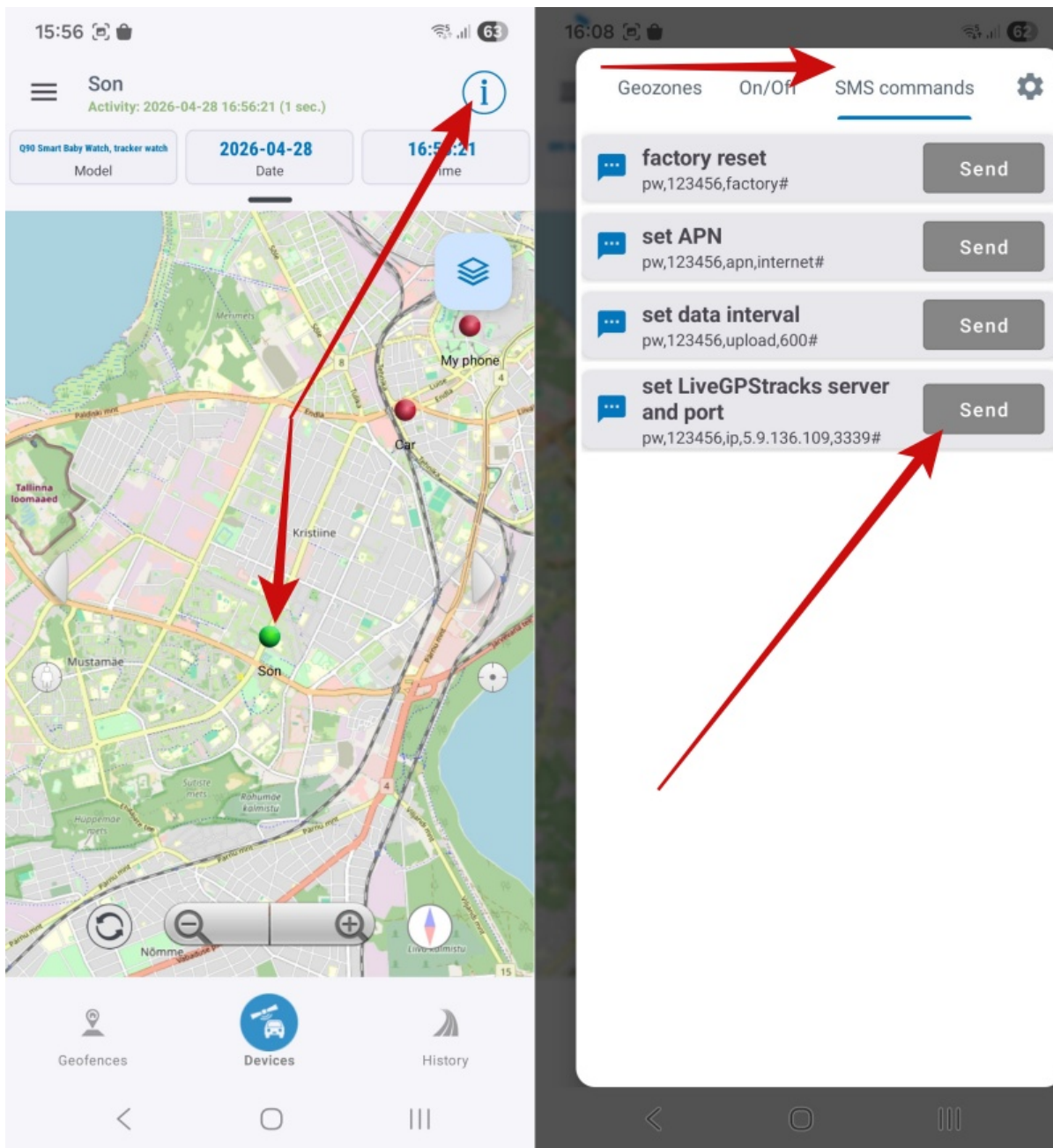
- Open the tracker in Tracker Management
- Set:
  - Command Set
  - SMS Phone Number (the SIM card inside the tracker)
- Save changes

After that:

- open the tracker on the map
- find the SMS Commands section
- tap Send

Your default SMS app will open with the number and message already filled in - just send it.





### Important

- SMS messages are sent directly from your phone
- They are charged according to your mobile operator’s tariff.
- The tracking service is not involved in sending SMS messages

From:  
<https://help.livegpstracks.com/> - **LiveGPTracks.com**

Permanent link:  
[https://help.livegpstracks.com/doku.php?id=sms\\_command\\_set](https://help.livegpstracks.com/doku.php?id=sms_command_set)

Last update: **2026/04/28 19:47**

